

# MEGA-TMS Software and Settings Download/Update

The MEGA-TMS software file is called Neuro-MEP.NETomega.

The VERIFY settings file is called VERIFY Settings+V2.

If you already have the MEGA-TMS software and VERIFY settings installed and want to update to newer versions, follow all steps.

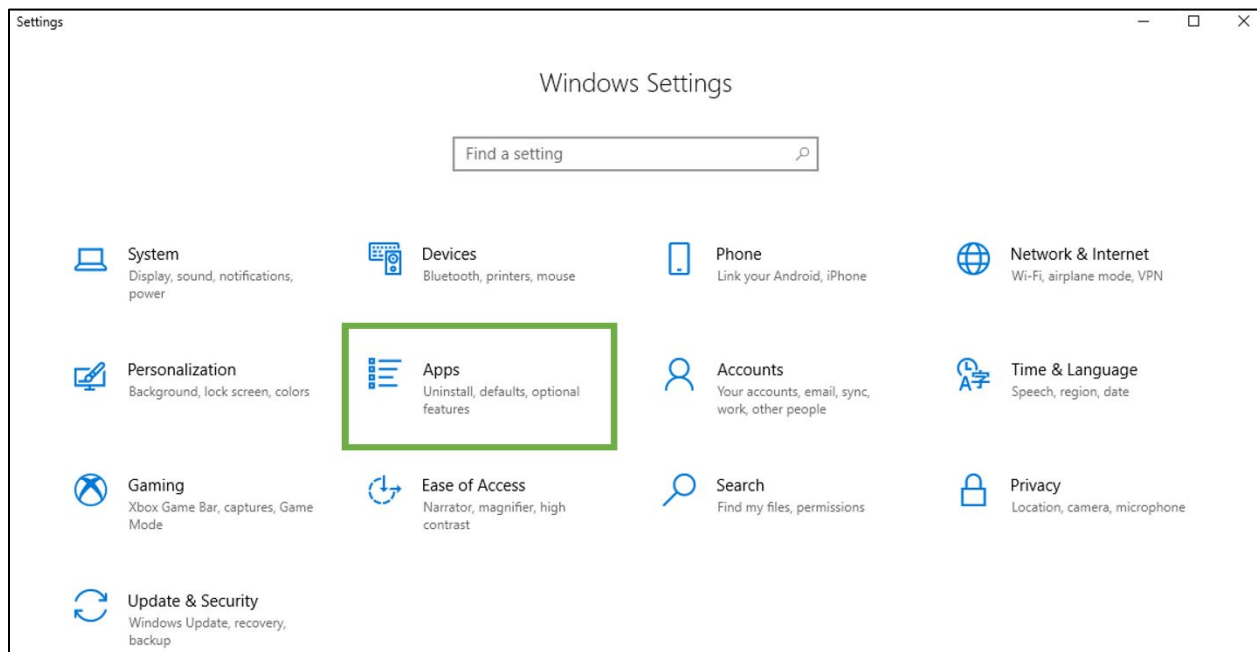
If you are installing MEGA-TMS software and VERIFY settings on a new device, follow steps 3-4.

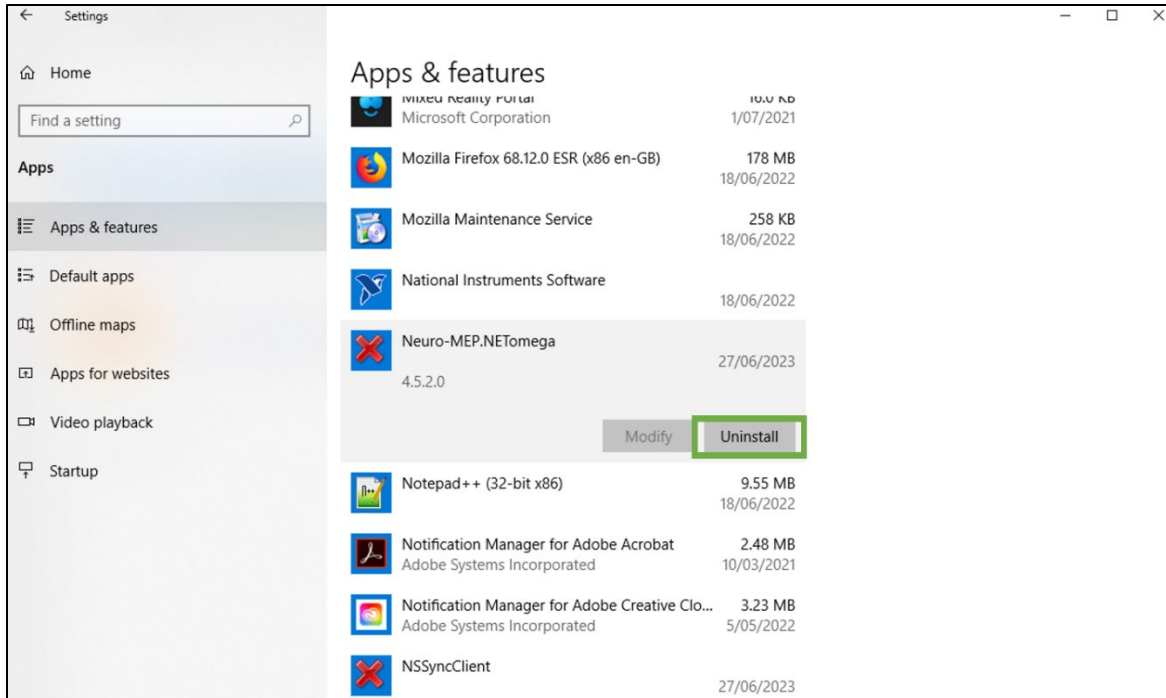
If you already have the MEGA-TMS software installed and want to update the VERIFY settings, download the settings from the link in step 3 then perform step 5.

## 1) Uninstall Neuro-MEP.NETomega

Prior to downloading the new software and settings, uninstall the one that is currently being used on the computer. The following steps and corresponding screenshots show the process.

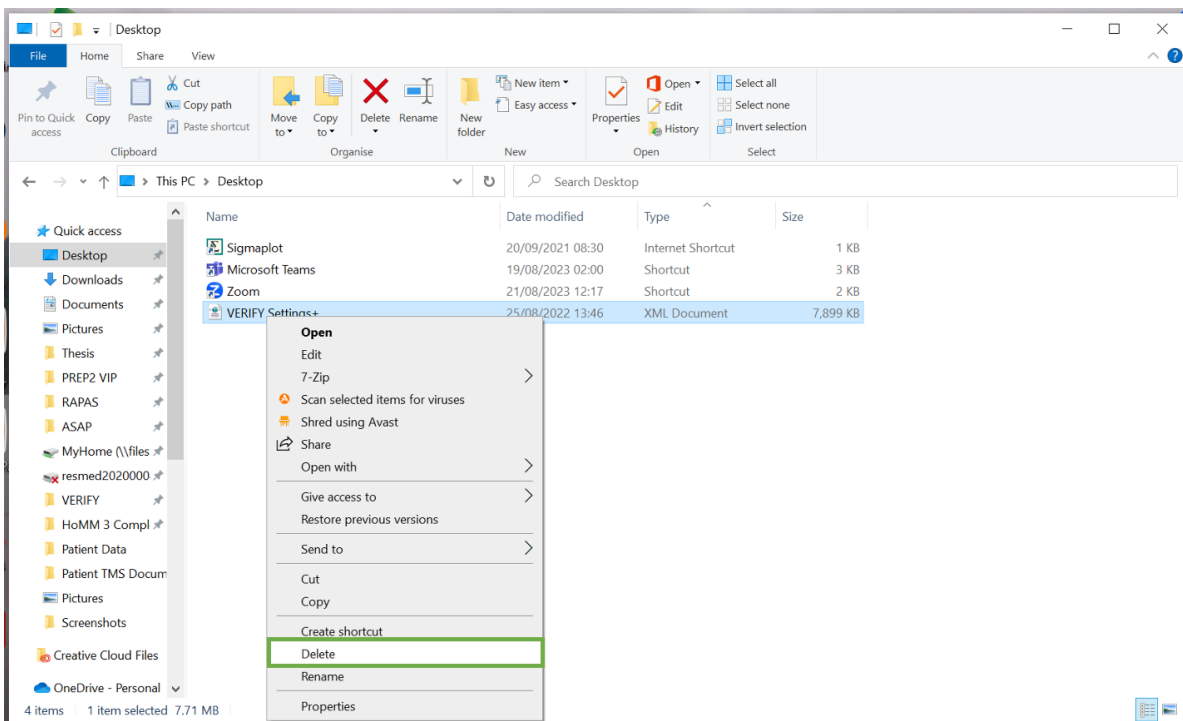
On the computer, go to **Windows Settings > Apps > Find Neuro-MEP.NETomega > Uninstall.**





## 2) Delete current settings file

Locate where you saved the current VERIFY settings file, right click the file, and delete it.



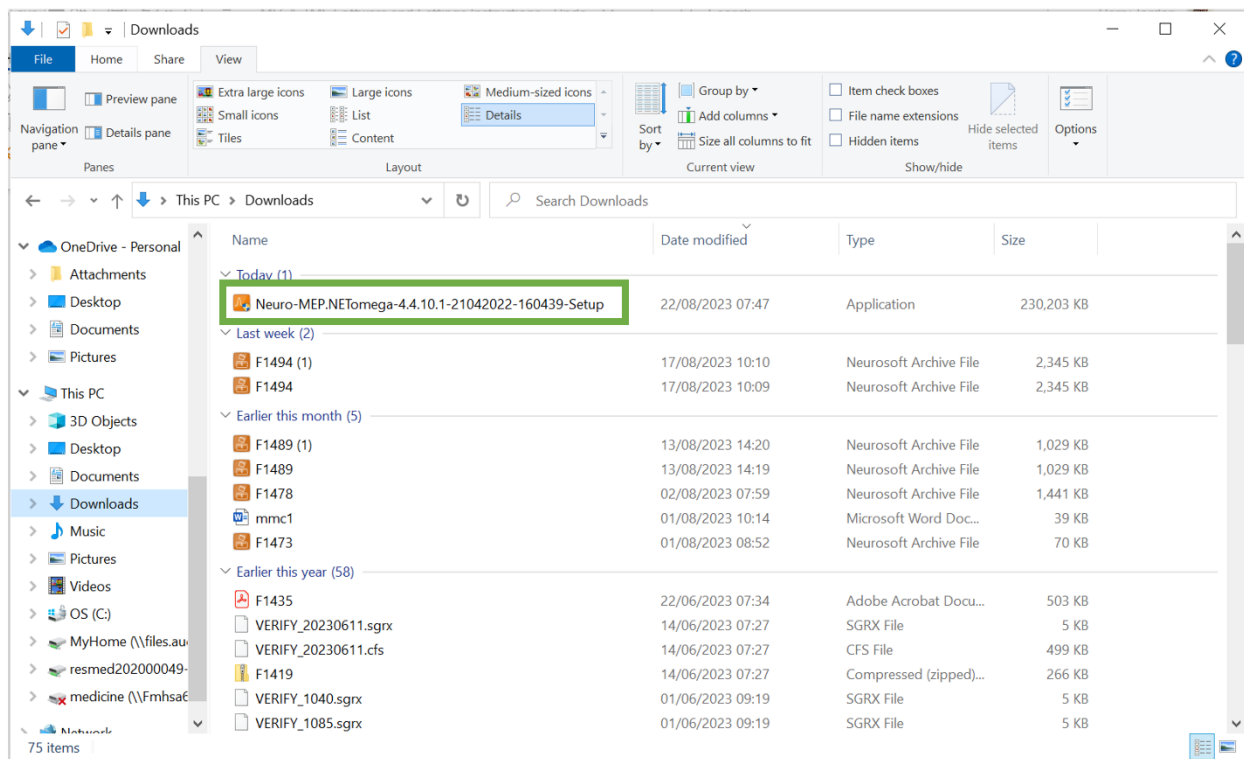
### 3) Download the MEGA-TMS software and VERIFY settings

The MEGA-TMS software is called Neuro-MEP.NETomega. Both the software and settings can both be downloaded from the following link:

<https://www.dropbox.com/scl/fo/m3mhskkogfygxq1ib08mg/h?rlkey=6nzy60am0x5jkieclgmwgg3it&dl=0>

### 4) Install the Neuro-MEP software

Install the MEGA-TMS software by going to the computer's **Download folder** > double click **Neuro-MEP.NETomega-4.4.10.1-21042022-160439-Setup**.



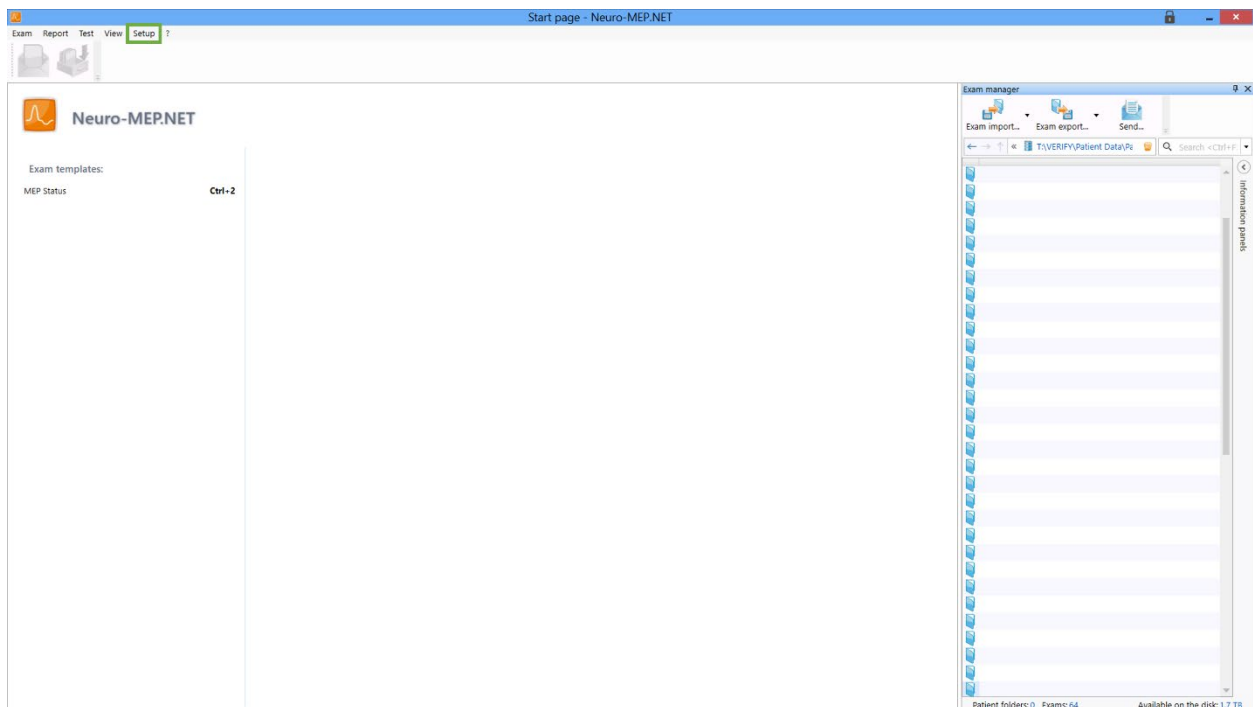
Follow the instructions on screen and click next until the installation is complete. It may take a minute for the installation instructions to appear.

## 5) Load the VERIFY settings

Once the MEGA-TMS software is installed, start the Neuro-MEP.NETOmega programme.



To load the VERIFY settings, in the top left of the screen go to **Setup >> load >>** and then select the **Verify Settings+V2 file**. If the setup button is not visible on the home page then click on the orange box in the very top left corner of the screen.



Once the new settings have been loaded, the software will restart with all the desired VERIFY settings. The software can now be used to collect TMS data. Your home page should look similar to the home page in the picture above if the settings were installed correctly.